

HISI

BY UNIFARDAS

HISI WEAR, HISI WORK



This is an interactive PDF! Click on the top menu if you wish to return to this table of contents!

HEALTH AND WELLNESS ----- 03

INDUSTRY AND SERVICES ----- 22

HOSPITALITY AND CATERING ----- 35

TEACHING ----- 61

HISTORY OF HISI ----- 75

CARE SYMBOLS ----- 77

BENEFITS AND ADVANTAGES ----- 78

Click here to access each segment.

HISI
BY UNIFARDAS

CATALOGUE



HEALTH AND WELLNESS



MANDARIN COLLAR SCRUB

 MASC.
  FEM.
  UNISSEXO

Ref.: TUS700001


Materials: Crepe

Weight: 230gr/m²

Composition: 67%

Recycled Polyester 29% Viscose
4% Elastane

Sizes: S to XXL

Colour available:  Dark blue

Washing instructions



**SUSTAINABLE
FABRIC**



PANTS WITH PINK DRAWSTRING WAISTBAND

 MASC.
  FEM.
  UNISSEXO


Ref.: CLS700001

Materials: Crepe

Weight: 230gr/m²

Composition: 67% Recycled
Polyester 29% Viscose 4% Elastane

Sizes: S to XXL

Colour available:  Dark blue

Washing instructions



Questions?

Send a message +351 912 339 406

**SHORT-SLEEVE MANDARIN
COLLAR SCRUB TOP**

 MASC.  FEM.  UNISSEXO

Ref.: TUU700001

Materials: Crepe

Weight: 230gr/m²

Composition: 67% Recycled
Polyester 29% Viscose 4% Elastane

Sizes: S to XXL

Colour available: ● Dark grey

Washing instructions



**SUSTAINABLE
FABRIC**



Questions?
Send a message +351 912 339 406



**SUSTAI-
NABLE
FABRIC**

UNISEX PANTS

  
MASC. FEM. UNISSEXO

Ref.: CLU701001

Materials: Crepe

Weight: 230gr/m2

Composition: 67% Recycled Polyester
29% Viscose 4% Elastane

Sizes: S to XXL

Colour available: ● Dark grey

Washing instructions



Questions?

Send a message +351 912 339 406



*Dancing
has never
been so **HISI***

HISI
BY UNIFARDAS



WOMEN'S LAB COAT

 MASC.
  FEM.
  UNISSEXO

Ref.: BTS107001

Materials: Serge

Weight: 190gr/m²

Composition: 65% Polyester 35% Cotton

Sizes: S to XXL

Colour available: ○ White

Washing instructions



MEN'S LAB COAT

 MASC.
  FEM.
  UNISSEXO

Ref.: BTH102001

Materials: Serge

Weight: 190gr/m²

Composition: 65% Polyester 35% Cotton

Sizes: S to XXL

Colour available: ○ White

Washing instructions



Questions?
Send a message +351 912 339 406

SCRUB PANTS

MASC. FEM. UNISSEXO

Ref.: CLS102001

Materials: Serge

Weight: 190gr/m²

Composition: 65% Polyester 35% Cotton

Sizes: S to XXL

Colours available: ☐ White, ☒ Green, ☐ Blue

Washing instructions



SCRUB TOP

MASC. FEM. UNISSEXO

Ref.: TUU437001 **Materials:** Serge

Weight: 190gr/m²

Composition: 65% Polyester 35% Cotton

Sizes: S to XXL

Colours available: ☐ White ☒ Green ☐ Blue

Washing instructions



Questions?

Send a message +351 912 339 406



SCRUBS

 MASC.
  FEM.
  UNISEXO

Ref.: CTUUB

Materials: Serge

Weight: 190gr/m²

Composition: 65% Polyester
35% Cotton

Sizes: S to XXL

Colours available:

 White
  Green
  Blue

Washing instructions



Questions?

Send a message +351 912 339 406

WOMEN'S SHAWL COLLAR SMOCK

 MASC.
  FEM.
  UNISSEXO

Ref.: BTS14200


Fabric: Twill

Weight: 240 gr/m2

Composition:

66% Polyester 28% Visose Ecovero 6% Spandex

Sizes: S to XXL

Color Available:  Beige

Washing instructions



**SUSTAINABLE
FABRIC**



Questions?
Send a message +351 912 339 406

HISI
BY UNIFARDAS



SUSTAINABILITY
MOBILITY
COMFORT

**SUSTAINABLE
FABRIC**



WOMEN'S PRINCESS DART SMOCK

 MASC.
  FEM.
  UNISEXO

Ref.: BTS14300

Fabric: Twill

Weight: 240 gr/m2

Composition:

66% Polyester 28% Visose Ecovero 6% Spandex

Sizes: S to XXL

Color Available: ☐ White

Washing instructions



Questions?
Send a message +351 912 339 406

**SUSTAINABLE
FABRIC**

MEN'S ZIP - FRONT SMOCK

 MASC.
  FEM.
  UNISSEXO

Ref.: BTH10800

Fabric: Twill

Weight: 240 gr/m2

Composition:

66% Polyester 28% Visose Ecovero

6% Spandex

Sizes: S to XXL

Color Available: ● Black

Washing Instructions



Questions?

Send a message +351 912 339 406



WOMEN'S V - NECK SCRUB TOP

 MASC.
  FEM.
  UNISEXO

Ref.: TUS70100

Fabric: Twill

Weight: 240 gr/m2

Composition:

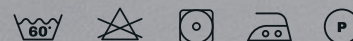
66% Polyester 28% Viseo Ecovero 6% Spandex

Sizes: S to XXL

Color Available:

● Blue with white contrast

● White with blue contrast



**SUSTAINABLE
FABRIC**



Questions?
Send a message +351 912 339 406



WOMEN'S MANDARIN COLLAR SCRUB

 MASC.
  FEM.
  UNISSEXO

Ref.: TUS70001

Fabric: Twill

Weight: 240 gr/m2

Composition:

66% Polyester 28% Visose Ecovero 6% Spandex

Sizes: S to XXL

Color Available: ☐ White

Washing Instructions



**SUSTAINABLE
FABRIC**



Questions?
Send a message +351 912 339 406

WOMEN'S ZIP FRONT SCRUB TOP

 MASC.
  FEM.
  UNISSEXO

Ref.: TUS11600

Fabric: Twill

Weight: 240 gr/m²

Composition:

66% Polyester 28% Visose Ecovero
6% Spandex

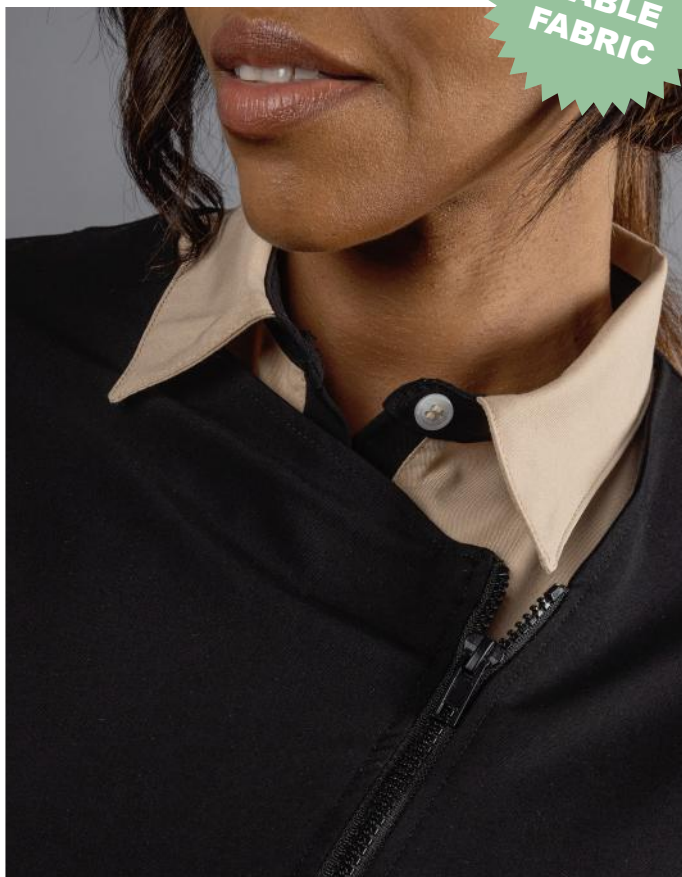
Sizes: S to XXL

Color Available: ● Black

Washing Instructions



**SUSTAINABLE
FABRIC**



Questions?

Send a message +351 912 339 406

WOMEN'S KIMONO SCRUB TOP

 MASC.
  FEM.
  UNISSEXO

Ref.: TUS11500

Fabric: Twill

Weight: 240 gr/m2

Composition:

66% Polyester 28% Viscose Ecovero 6% Spandex

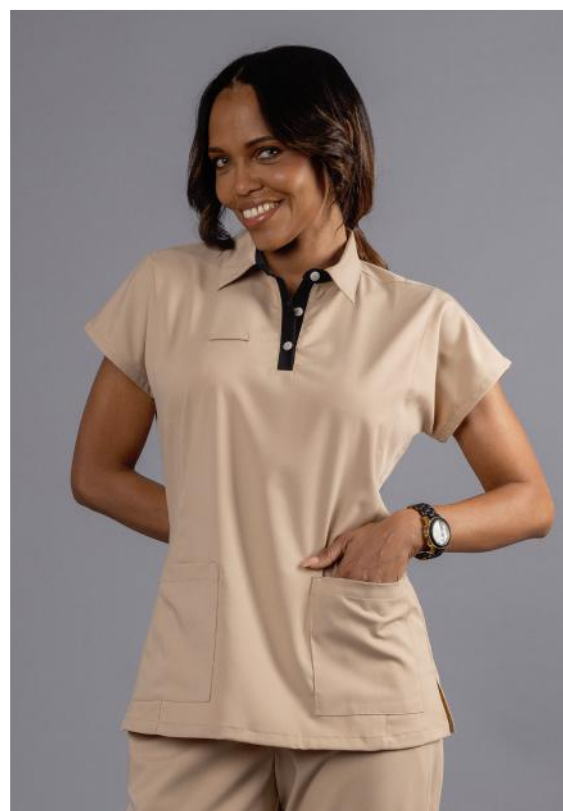
Sizes: S to XXL

Color Available:

● black with beige contrast

● beige with black contrast

Washing Instructions



**SUSTAINABLE
FABRIC**



Questions?
Send a message +351 912 339 406



**SUSTAINABLE
FABRIC**

WOMEN'S SCRUB PANTS

MASC. FEM. UNISSEXO

Fabric: Twill

Weight: 240 gr/m²

Composition:

66% Polyester 28% Viscose Ecovero 6% Spandex

Sizes: S to XXL

Color Available: ☒ white

Washing Instructions



Questions?

Send a message +351 912 339 406

WOMEN'S SIDE STRIPE PANTS

MASC. FEM. UNISSEXO

Ref.: CLS70200

Fabric: Twill

Weight: 240 gr/m2

Composition:

66% Polyester 28% Viscose Ecovero 6% Spandex

Sizes: S to XXL

Color Available:

Blue with white contrast ●

White with blue contrast ○

Washing Instructions



SUSTAINABLE
FABRIC



Questions?
Send a message +351 912 339 406



WOMEN'S ELASTIC WAIST TROUSERS

 MASC.
  FEM.
  UNISEXO

Ref.: CLS70100

Fabric: Twill

Weight: 240 gr/m²

Composition:

66% Polyester 28% Viscose Ecovero 6% Spandex

Sizes: S to XXL

Color Available:

black with beige contrast 

beige with black contrast 

Washing Instructions



**SUSTAINABLE
FABRIC**



Elastic on the sides



Questions?
Send a message +351 912 339 406

HISI
BY UNIFARDAS

CATALOGUE



INDUSTRY AND SERVICES



WORK UTILITY COVERALL

 MASC.  FEM.  UNISSEXO

Ref.: FMH10800

Fabric: Twill

Weight: 200 gr/m²

Composition:

64% Polyester 33% Cotton 3%

Spandex

Sizes: S to XXL

Color Available: Gray ●

Washing Instructions



Questions?

Send a message +351 912 339 406



MEN'S JACKET WITH BACK PLEATS

 MASC.
  FEM.
  UNISSEXO

Ref.: BLH12200

Fabric: Twill

Weight: 200 gr/m2

Composition:

64% Polyester 33% Cotton 3% Spandex

Sizes: S to XXL

Color Available: Gray ●

Washing Instructions



Questions?
Send a message +351 912 339 406



MEN'S WORK PANTS WITH KNEE PADS

 MASC.
  FEM.
  UNISSEXO

Ref.: CLH12700

Fabric: Twill

Weight: 200 gr/m2

Composition:

64% Polyester 33% Cotton 3% Spandex

Sizes: 36 to 48

Color Available: Gray ●

Washing Instructions



Questions?
Send a message +351 912 339 406

MEN'S MULTI POCKETS WORK UTILITY VEST

 MASC.  FEM.  UNISSEXO

Ref.: COH11600

Fabric: Twill

Weight: 200 gr/m²

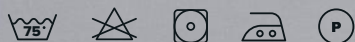
Composition:

64% Polyester 33% Cotton 3%
Spandex

Sizes: S to XXL

Color Available: Gray ●

Washing Instructions



Questions?

Send a message +351 912 339 406

WORK UTILITY OVERALL WITH KNEE

 MASC.
  FEM.
  UNISSEXO

Ref.: JAH10600

Fabric: Twill

Weight: 200 gr/m²

Composition:

64% Polyester 33% Cotton 3%
Spandex

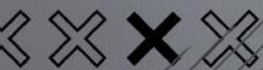
Sizes: S to XXL

Color Available: Gray ●

Washing Instructions

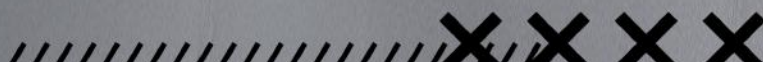


Questions?
Send a message +351 912 339 406



HISI
BY UNIFARDAS

**ELASTICITY
PROTECTION AND
FLEXIBILITY**





MEN'S LONG SLEEVES COAT

MASC. FEM. UNISEXO

Ref.: BTH10700

Fabric: Twill

Weight: 200 gr/m2

Composition:

65% Polyester 35% Cotton

Sizes: S to XXL

Color Available:

Gray ●

Navy Blue ●

Washing Instructions



Questions?
Send a message +351 912 339 406

WOMEN'S LONG SLEEVES COAT

MASC. FEM. UNISSEXO

Ref.: BTS14700

Fabric: Twill

Weight: 200 gr/m²

Composition:

65% Polyester 35% Cotton

Sizes: S to XXL

Color Available:

Gray ●

Navy Blue ●

Washing Instructions



Questions?
Send a message +351 912 339 406



**WOMEN'S SHORT
SLEEVES COAT**



MASC.



FEM.



UNISSEXO

Ref.: BTS14701

Fabric: Twill

Weight: 200 gr/m2

Composition:

65% Polyester 35% Cotton

Sizes: S to XXL

Color Available:

Gray ●

Navy Blue ●

Washing Instructions



Questions?

Send a message +351 912 339 406

PANTS

 MASC.
  FEM.
  UNISSEXO

Ref.: CLH104003

Fabric: Twill

Weight: 200 gr/m2

Composition:

65% Polyester 35% Cotton

Sizes: S to XXL

Color Available:

Gray ●

Navy Blue ●

Washing Instructions



Questions?
Send a message +351 912 339 406



COBBLER APRON WITH TWO POCKETS

 MASC.
  FEM.
  UNISSEXO

Ref.: BTA11100

Fabric: Twill

Weight: 200 gr/m²

Composition:

65% Polyester 35% Cotton

Sizes: S to XXL

Color Available: Navy Blue ●

Washing Instructions



Questions?
Send a message +351 912 339 406



WOMEN'S SLEEVELESS HOUSEKEEPING SMOCK

 MASC.
  FEM.
  UNISEXO

Ref.: BTS14800

Fabric: Twill

Weight: 200 gr/m2

Composition:

65% Polyester 35% Cotton

Sizes: S to XXL

Color Available:

Blue 

Green 

Washing Instructions



Questions?

Send a message +351 912 339 406

HISI
BY UNIFARDAS

CATALOGUE



HOSPITALITY AND CATERING



DENIM CHEST APRON

MASC. FEM. UNISSEXO

Ref.: AV0139001

Materials: Denim

Weight: 355gr/m2

Composition: 100% Cotton

One size fits all

Colour available: Blue

Washing instructions



Unwashed denim may change colour after washing.

Wash the garment alone in the first wash to avoid staining other clothes



Questions?

Send a message +351 912 339 406



WAIST DENIM APRON

 MASC.
  FEM.
  UNISSEXO

Ref.: AV0138001

Materials: Denim

Weight: 355gr/m2

Composition: 100% Cotton

One size fits all

Colour available: Blue

Washing instructions



Unwashed denim may change colour after washing.

Wash the garment by itself in the first wash to avoid staining other clothes



Questions?
Send a message +351 912 339 406

WHITE CHEST APRON WITH BUCKLE

MASC. FEM. UNISSEXO

Ref.: AVO114001

Materials: Serge

Weight: 200gr/m2

Composition: 65% Polyester 35% Cotton

One size fits all

Colour available: White

Washing instructions



BLACK CHEST APRON WITH BUCKLE AND POCKET

MASC. FEM. UNISSEXO

Ref.: AVO114002

Materials: Serge

Weight: 200gr/m2

Composition: 65% Polyester 35% Cotton

One size fits all

Colour available: Black

Washing instructions



Questions?

Send a message +351 912 339 406



WAIST APRON

MASC. FEM. UNISSEXO

Ref.: AV0122001

Materials: Serge

Weight: 240gr/m2

Composition: 65% Polyester
35% Cotton

One size fits all

Colour available: Black

Washing instructions



Questions?

Send a message +351 912 339 406



CHEST APRON

 MASC.
  FEM.
  UNISSEXO

Ref.: AVO137001

Materials: Serge

Weight: 200gr/m2

Composition: 65% Polyester 35% Cotton

One size fits all

Colour available: Bordeaux

Washing instructions



LINEN CHEST APRON

 MASC.
  FEM.
  UNISSEXO

Ref.: AV0141001

Materials: Linen

Weight: 150gr/m2

Composition: 55% Linen 45% Cotton

One size fits all

Colour available: Grey

Washing instructions



Questions?

Send a message +351 912 339 406



TABARD

 MASC.
  FEM.
  UNISSEXO

Ref.: BTA110001

Materials: Serge

Weight: 200gr/m2

Composition: 65% Polyester 35% Cotton

Size: S/M and L/XL

Colours available: ● Black, ○ White

Washing instructions



Different tightening methods possible.



Questions?
Send a message +351 912 339 406

STRIPED TABARD

MASC. FEM. UNISSEXO

Ref.: BTA110002


Materials: Serge

Weight: 200gr/m2

Composition: 65% Polyester

35% Cotton

Size: S/M and L/XL

Colour available:  Stripes

Washing instructions



Different
tightening
methods
possible



Questions?
Send a message +351 912 339 406

BIB LINEN APRON

 MASC.
  FEM.
  UNISSEXO

Ref.: AV0140001

Materials: Linen

Weight: 150gr/m2

Composition: 55% Linen
45% Cotton

One size fits all

Colour available: Grey

Washing instructions



Questions?
Send a message +351 912 339 406



WRAP AROUND TUNIC

 MASC.
  FEM.
  UNISSEXO

Ref.: BTS128001

Materials: Serge

Weight: 200gr/m2

Composition: 65% Polyester 35% Cotton

Size: S/M and L/XL

Colour available: Blue

Washing instructions



Questions?

Send a message +351 912 339 406



WOMEN'S CHEF TROUSERS

 MASC.
  FEM.
  UNISEXO

Ref.: CLS115001

Materials: Serge

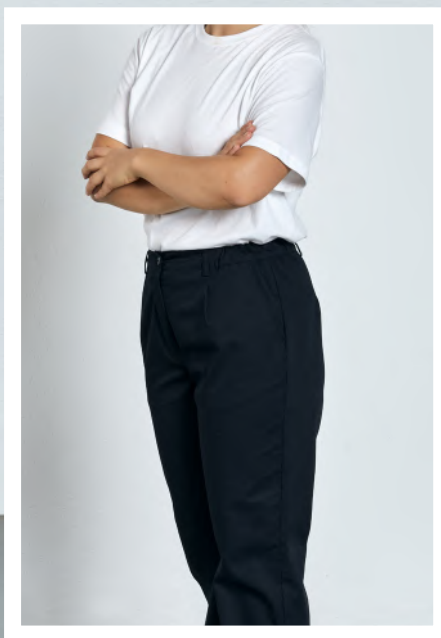
Weight: 200gr/m2

Composition: 65% Polyester 35% Cotton

Sizes: S to XXL

Colours available: White, Black

Washing instructions



Elastic



Questions?

Send a message +351 912 339 406

CHEQUERED CHEF'S TROUSERS

MASC. FEM. UNISEXO

Ref.: CLS115002

Materials: Pied de poule

Weight: 200gr/m2

Composition: 65% Polyester
35% Cotton

Sizes: S to XXL

Colour available: Chequered

Washing instructions



Elastic





MEN'S CHEF PANTS

 MASC.
  FEM.
  UNISSEXO

Ref.:CLH125001

Materials: Serge

Weight: 200gr/m2

Composition: 65% Polyester 35% Cotton

Sizes: S to XXL

Colours available: White, Black

Washing instructions





CHEQUERED CHEF'S TROUSERS

  
MASC. FEM. UNISSEXO

Ref.: CLH125002

Materials: Pied de poule

Weight: 200gr/m2

Composition: 65% Polyester
35% Cotton

Sizes: S to XXL

Colour available: Chequered

Washing instructions





WORK SHIRT

MASC. FEM. UNISSEXO

Ref.: CMS105001

Materials: Poplin

Weight: 105gr/m2

Composition: 65% Polyester
35% Cotton

Size: S to XXL

Colour available: White

Washing instructions



CHINO TROUSERS

MASC. FEM. UNISSEXO

Ref.: CLS114001

Materials: Serge

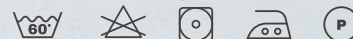
Weight: 195gr/m2

Composition: 64% Polyester
33% Cotton 3% Elastane

Size: 34 to 46

Colours available: Blue,
Black

Washing instructions



Questions?

Send a message +351 912 339 406

CHINO TROUSERS

MASC. FEM. UNISSEXO

Ref.: CLH124001

Materials: Serge

Weight: 195gr/m2

Composition: 64% Polyester 33% Cotton
3% Elastane

Size: 36 to 48

Colours available: Blue, Black

Washing instructions



WORK SHIRT

MASC. FEM. UNISSEXO

Ref.: CMH106001

Materials: Poplin

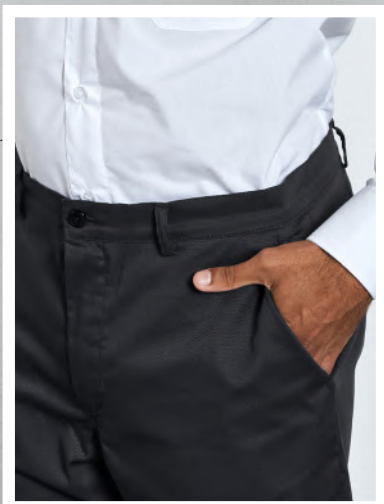
Weight: 105gr/m2

Composition: 65% Polyester
35% Cotton

Size: S to XXL

Colour available: White

Washing instructions



Questions?

Send a message +351 912 339 406

CHEF'S CAP WITH BACK STRAP

 MASC.
  FEM.
  UNISSEXO

Ref.: BOT104001

Materials: Serge

Weight: 200gr/m2

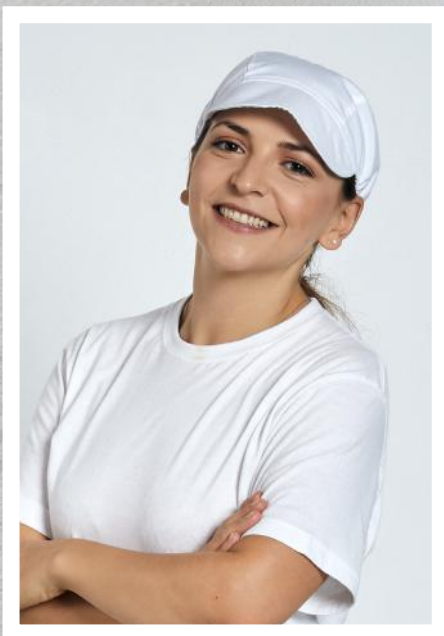
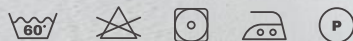
Composition: 65% Polyester

35% Cotton

One size fits all

Colours available: White, Black

Washing instructions



Questions?
Send a message +351 912 339 406

**BLACK LONG SLEEVE
CHEF'S JACKET**

MASC. FEM. UNISSEXO

Ref.: CSS116001 (female model) CSH117001 (male model)

Materials: Serge

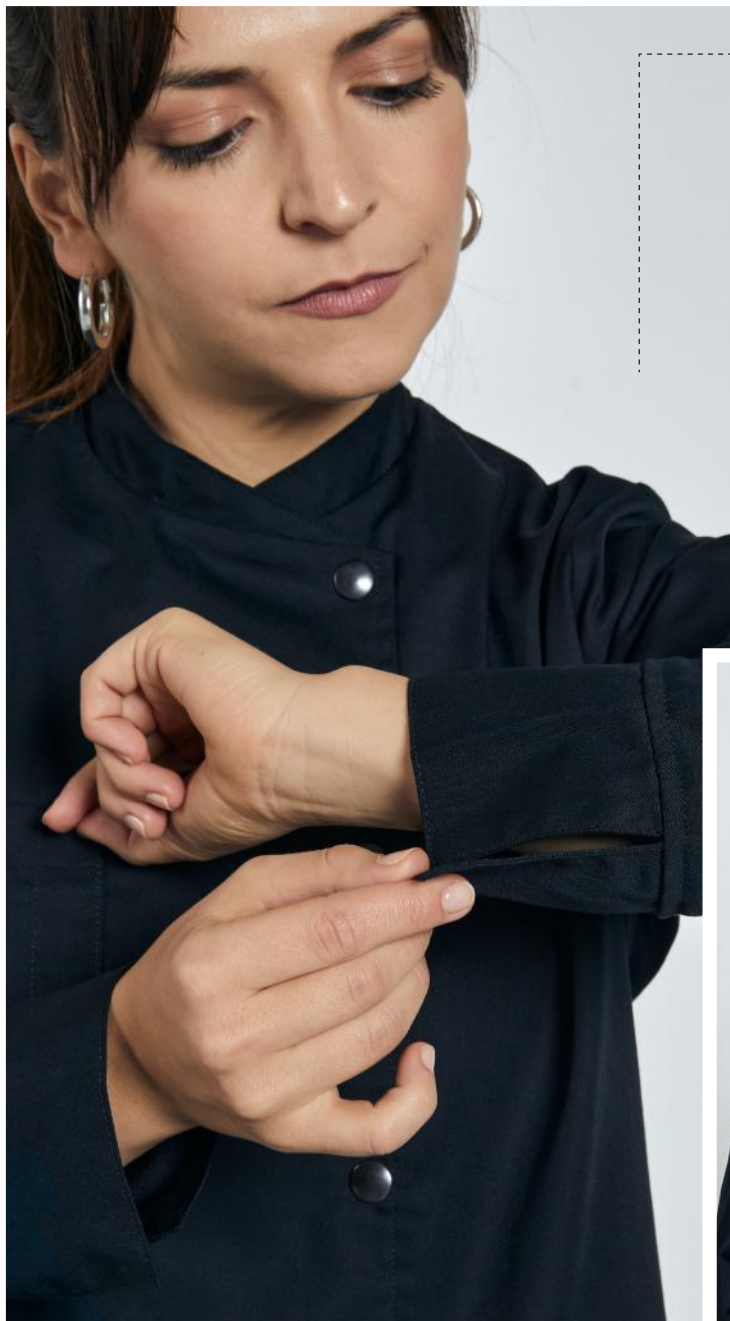
Weight: 200gr/m2

Composition: 65% Polyester 35% Cotton

Size: S to XXL

Colour available: Black

Washing instructions



Pen pocket



Questions?
Send a message +351 912 339 406



**WHITE LONG SLEEVE
CHEF'S JACKET**

 MASC.
  FEM.
  UNISSEXO

Ref.: CSS116001 (female model) CSH117001 (male model)

Materials: Serge

Weight: 200gr/m2

Composition: 65% Polyester 35% Cotton

Size: S to XXL

Colour available: White

Washing instructions



Pen pocket



Questions?
Send a message +351 912 339 406

BLACK SHORT-SLEEVE CHEF'S JACKET

 MASC.
  FEM.
  UNISSEXO

Ref.: CSS116003 (female model)

CSH117003 (male model)

Materials: Serge

Weight: 200gr/m2

Composition: 65% Polyester 35% Cotton

Size: S to XXL

Colour available: Black

Washing instructions



Questions?
Send a message +351 912 339 406

WHITE SHORT-SLEEVE CHEF'S JACKET

 MASC.
  FEM.
  UNISSEXO

Ref.: CSS116003 (female model)

CSH117003 (male model)

Materials: Serge

Weight: 200gr/m2

Composition: 65% Polyester 35% Cotton

Size: S to XXL

Colour available: White

Washing instructions



Pocket



Questions?
Send a message +351 912 339 406

*Comfort, protection,
modern design
and extra mobility*



HISI
BY UNIFARDAS



LONG SLEEVE CHEF'S JACKET

 MASC.
  FEM.
  UNISSEXO

Ref.: CSS116002 (female model) CSH117002 (male model)

Materials: Denim

Weight: 180gr/m2

Composition: 65% Polyester 35% Cotton

Sizes: S to XXL

Colour available: Blue

Washing instructions



Pen pocket



Questions?
Send a message +351 912 339 406

SHORT-SLEEVE CHEF'S JACKET

MASC. FEM. UNISSEXO

Ref.: CSS116004 (female model)

CSH117004 (male model)

Materials: Denim

Weight: 180gr/m2

Composition: 65% Polyester 35% Cotton

Sizes: S to XXL

Colour available: Blue

Washing instructions



Pocket



Questions?
Send a message +351 912 339 406

CLASSIC BLACK VEST

MASC. FEM. UNISEXO

Ref.: COS101001

Materials: Taffeta

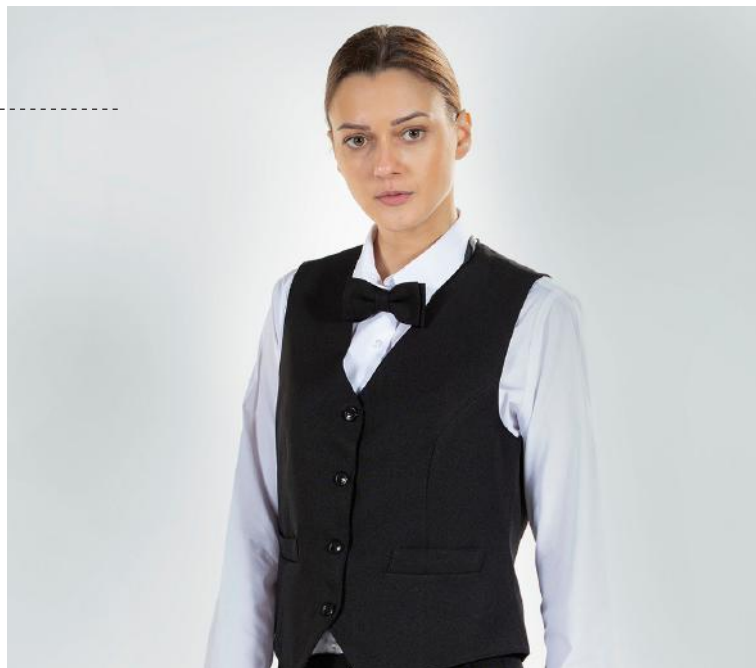
Weight: 150gr/m2

Composition: 100% Polyester

Sizes: S to XXL

Colour available: Black

Washing instructions



CHEF'S HAT

MASC. FEM. UNISEXO

Ref.: BCC101001

Materials: Serge

Weight: 190gr/m2

Composition: 65% Polyester 35% Cotton

One size fits all

Colour available: White

Washing instructions



HAIR NET

MASC. FEM. UNISEXO

Ref.: BOT105001

Materials: Serge

Weight: 190gr/m2

Composition: 65% Polyester 35% Cotton

One size fits all

Colour available: White

Washing instructions



CLASSIC BOW TIE

 MASC.
  FEM.
  UNISSEXO

Ref.: LAC101001

Materials: Taffeta

Weight: 150gr/m2

Composition: 100% Polyester

One size fits all

Colour available: Black

Washing instructions



CHEF'S SKULL CAP

 MASC.
  FEM.
  UNISSEXO

Ref.: BOK103001

Materials: Serge

Weight: 190gr/m2

Composition: 65% Polyester 35% Cotton

One size fits all

Colour available: White

Washing instructions



Questions?

Send a message +351 912 339 406

HISI
BY UNIFARDAS

CATALOGUE



TEACHTING

NURSERY SMOCK WITH RAGLAN SLEEVES

MASC. FEM. UNISSEXO

Ref.: BTC116001

Materials: Poplin

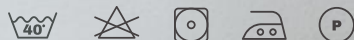
Weight: 110gr/m2

Composition: 50% Polyester 50% Cotton

Sizes: 2 to 6 years old

Colour available: Yellow

Washing instructions



Yellow colour pattern: chequered



Questions?
Send a message +351 912 339 406

NURSERY SMOCK WITH RAGLAN SLEEVES

MASC. FEM. UNISSEXO

Ref.: BTC116001

Materials: Poplin

Weight: 110gr/m2

Composition: 50% Polyester 50% Cotton

Sizes: 2 to 6 years old

Colour available: Yellow

Washing instructions



Yellow colour pattern: chequered



REVERSIBLE PANAMA HAT WITH BRIM AND

Ref.: CPAN103002

Materials: Poplin

Weight: 110gr/m2

Composition: 50% Polyester
50% Cotton

Sizes: 52cm to 56cm

Colours available: Yellow

Washing instructions



BACKPACK

Ref.: CPAN103002

Materials: Poplin

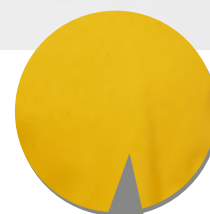
Weight: 200gr/m2

Composition: 67% Polyester
33 % Cotton

Sizes: 30cm

Colours available: Yellow

Washing instructions

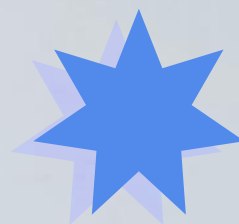


Panama's inside
fabric.

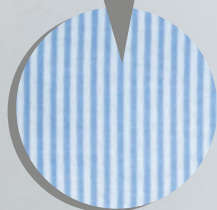


Questions?

Send a message +351 912 339 406



Blue colour pattern: stripes



NURSERY SMOCK WITH RAGLAN SLEEVES

MASC. FEM. UNISEXO

Ref.: BTC116002

Materials: Poplin

Weight: 110gr/m2

Composition: 50% Polyester 50% Cotton

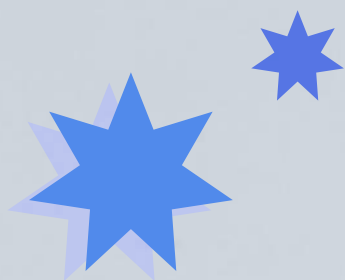
Sizes: 2 to 6 years old

Colour available: Light blue

Washing instructions



Questions?
Send a message +351 912 339 406



NURSERY SMOCK WITH RAGLAN SLEEVES

 MASC.
  FEM.
  UNISSEXO

Ref.: BTC116002

Materials: Poplin

Weight: 110gr/m2


Composition: 50% Polyester 50% Cotton

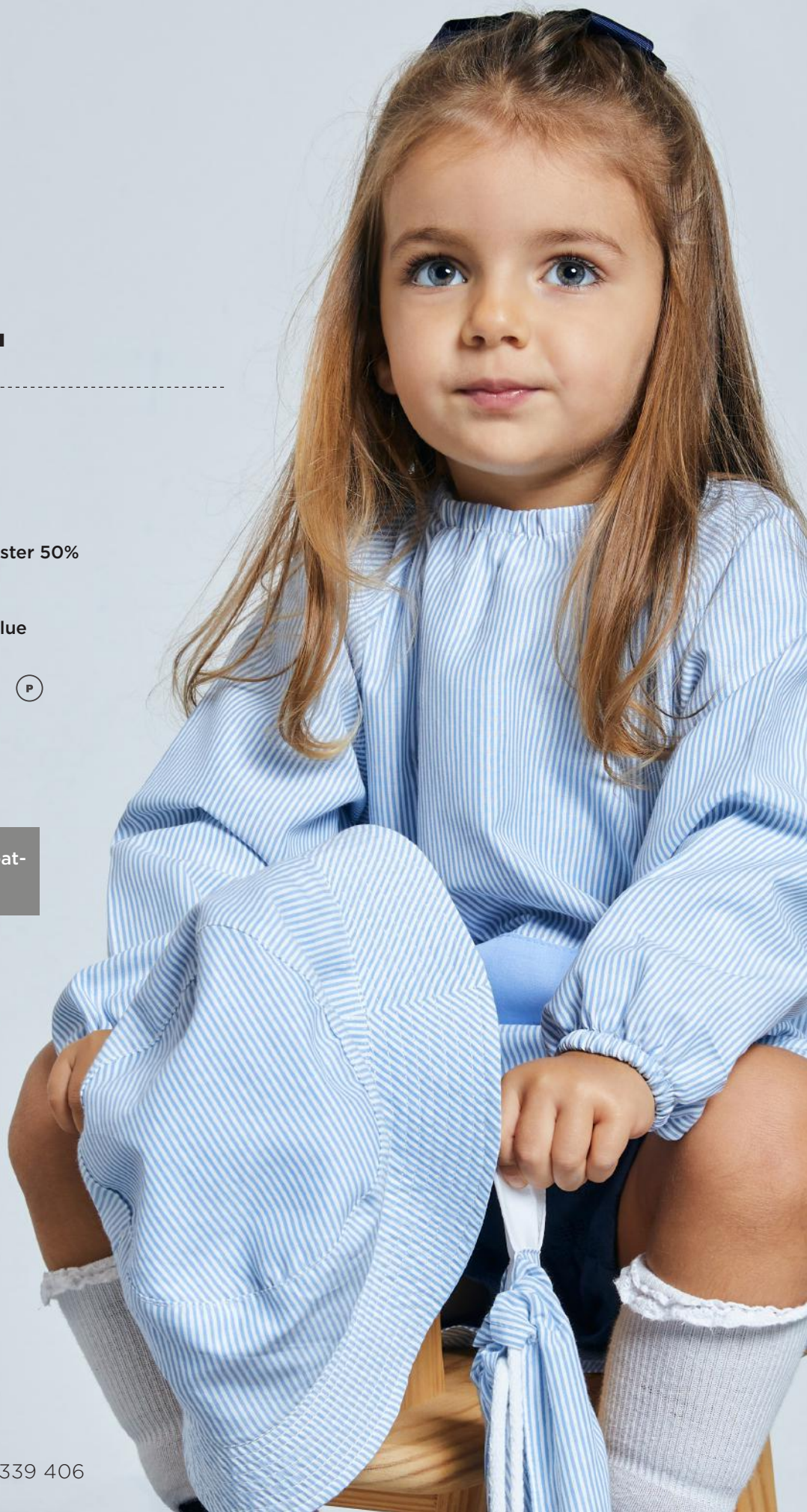
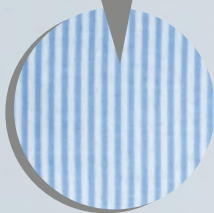
Sizes: 2 to 6 years old

Colour available: Light blue

Washing instructions



 Blue colour pattern: stripes



Questions?
 Send a message +351 912 339 406



REVERSIBLE PANAMA WITH BRIM AND CUP

Ref.: CPAN103001

Materials: Poplin

Weight: 110gr/m2

Composition: 50% Polyester
50% Cotton

Sizes: 52cm to 56cm

Colours available: Light blue

Washing instructions



BACKPACK

Ref.: CPAN103001

Materials: Poplin

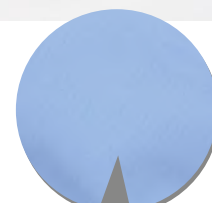
Weight: 200gr/m2

Composition: 67% Polyester
33% Cotton

Size: 30cm

Colours available: Light blue

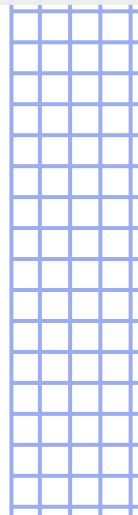
Washing instructions



Panama's inside
fabric.



Questions?
Send a message +351 912 339 406



BUTTON-DOWN NURSERY SMOCK

 MASC.
  FEM.
  UNISSEXO

Ref.: BTC112001

Materials: Poplin

Weight: 110gr/m2


Composition: 50% Polyester
50% Cotton

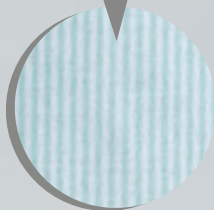
Sizes: 2 to 6 years old

Colour available: Light green

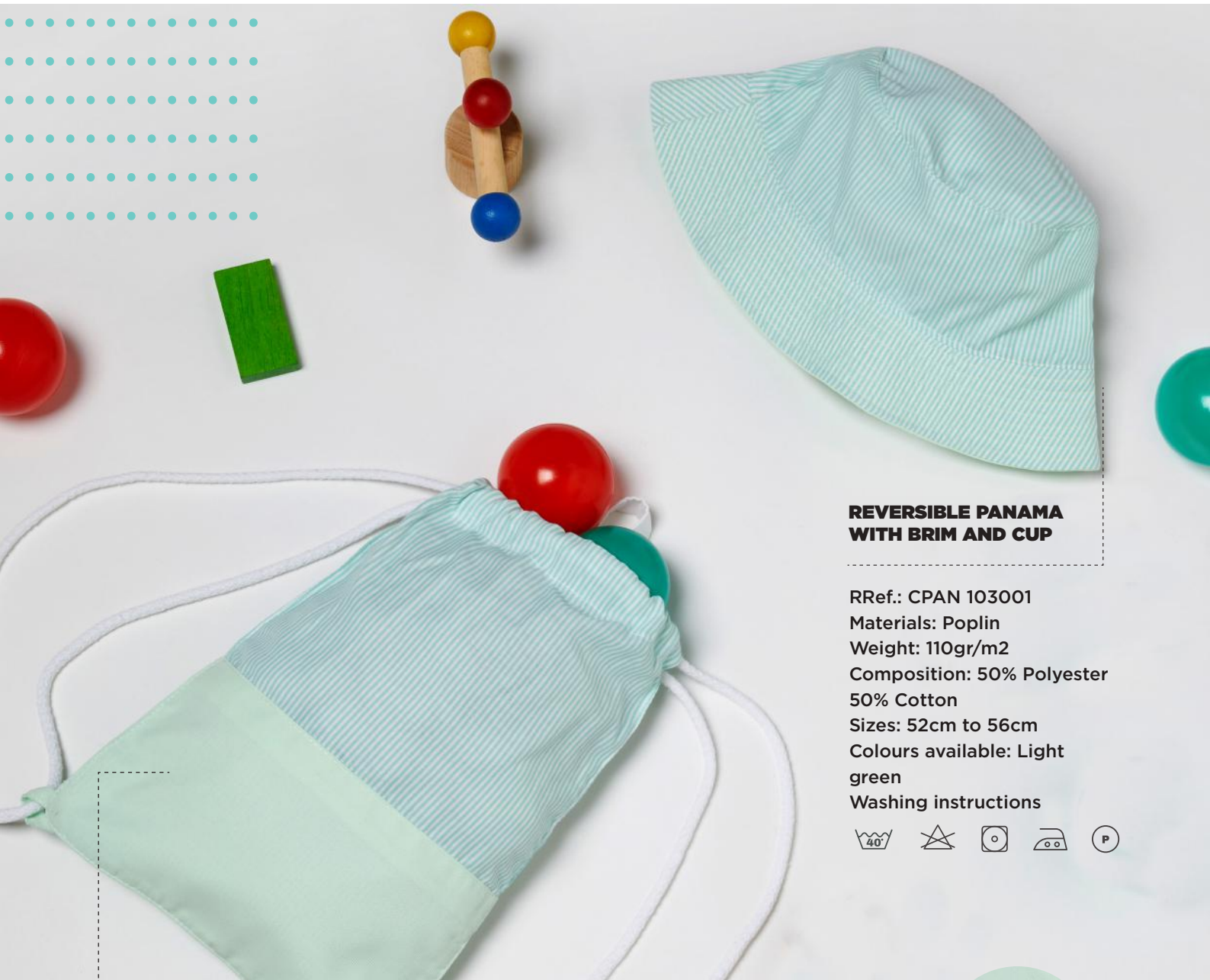
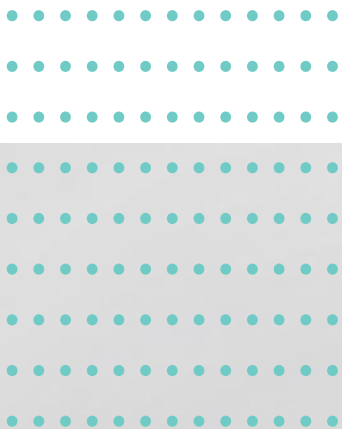
Washing instructions



 Green colour pattern: stripes



Questions?
 Send a message +351 912 339 406



REVERSIBLE PANAMA WITH BRIM AND CUP

RRef.: CPAN 103001

Materials: Poplin

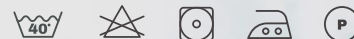
Weight: 110gr/m2

Composition: 50% Polyester
50% Cotton

Sizes: 52cm to 56cm

Colours available: Light
green

Washing instructions



BACKPACK

Ref.: CPAN103001

Materials: Poplin

Weight: 200gr/m2

Composition: 67% Polyester
33% Cotton

Size: 30cm

Colours available: Light green

Washing instructions



Panama's inside
fabric.



Questions?
Send a message +351 912 339 406



NURSERY SMOCK

 MASC.
  FEM.
  UNISSEXO

Ref.: BTC114001

Materials: Poplin

Weight: 110gr/m2

Composition: 50% Polyester 50% Cotton

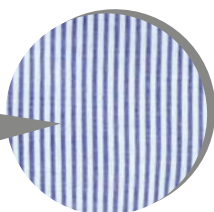
Sizes: 2 to 6 years old

Colour available: Blue

Washing instructions



Blue colour pattern: stripes



Questions?
Send a message +351 912 339 406



REVERSIBLE PANAMA WITH BRIM AND CUP

Ref.: CPAN103001

Materials: Poplin

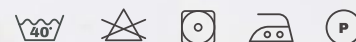
Weight: 110gr/m2

Composition: 50% Polyester
50% Cotton

Sizes: 52cm to 56cm

Colours available: Blue

Washing instructions



BACKPACK

Ref.: CPAN103001

Materials: Poplin

Weight: 200gr/m2

Composition: 67% Polyester
33 % Cotton

Size: 30cm

Colours available: Blue

Washing instructions



Panama's inside
fabric.



Questions?

Send a message +351 912 339 406

NURSERY SMOCK

MASC. FEM. UNISSEXO

Ref.: BTC115001

Materials: Poplin

Weight: 110gr/m2

Composition: 50% Polyester 50% Cotton

Sizes: 2 to 6 years old

Colour available: Red

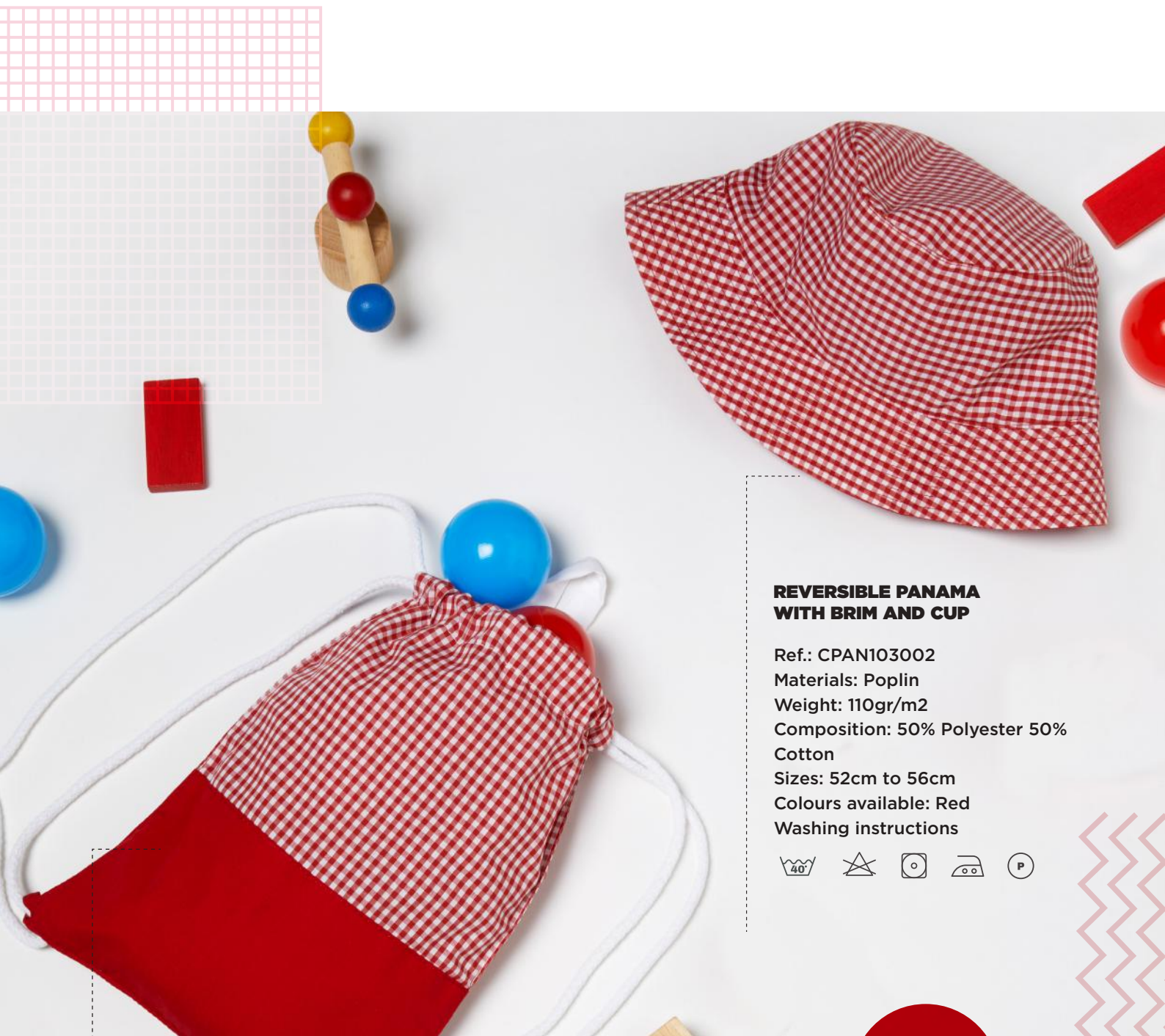
Washing instructions



Red colour pattern:
plaid



Questions?
Send a message +351 912 339 406



**REVERSIBLE PANAMA
WITH BRIM AND CUP**

Ref.: CPAN103002

Materials: Poplin

Weight: 110gr/m2

Composition: 50% Polyester 50% Cotton

Sizes: 52cm to 56cm

Colours available: Red

Washing instructions



BACKPACK

Ref.: CPAN103002

Materials: Poplin

Weight: 200gr/m2

Composition: 67% Polyester 33% Cotton

Size: 30cm

Colours available: Red

Washing instructions



Panama's inside fabric.



Questions?
Send a message +351 912 339 406



Comfort, protection and mobility

HISI
BY UNIFARDAS

HISI represents the online store of Unifardas that provides workwear to those seeking comfort, protection, and design. In addition to the above, HISI also offers some sustainable uniform solutions.

**MARCH
2021**

LAUNCH OF HISI COLLECTION FOR HEALTHCARE PROFESSIONALS

Launched in March 2021, HISICOLLECTION intended and still intends to be more than a Workwear collection. HISI Collection wishes to help to create an innovative experience where comfort, protection, and sustainability under the form of Workwear is valued.

2020

Launch of the online
store of Unifardas

Launch of HISI Collection (me-
dical clothing developed from
sustainable materials)

2021

2022

The online store Unifardas takes
the name HISI for all articles on
that platform.

HISI IS NOW THE BRAND REPRESENTING THE ONLINE STORE OF UNIFARDAS, COVERING DIFFERENT AREAS OF ACTIVITY.

2023

HISI is mainly a brand representing Unifardas E-commerce.

The brand has evolved over time, and it is currently known for its workwear collection sold online that focuses on benefits directly linked to users and that have a direct impact on their day to day work.

Benefits such as comfort, an effective level of protection, an ergonomically thought-out design for the worker that facilitates mobility and flexibility are matters that we take very seriously.

HISI believes that workwear should be comfortable, durable and modern all at the same time. To cover these needs, the brand uses cutting-edge technologies and high-quality fabrics in its products. In addition, HISI is also concerned about the environment and, therefore, uses sustainable raw materials in its production.

HISI'S COLLECTION IS EXTENSIVE AND COVERS DIFFERENT SECTORS OF WORKWEAR.

For each sector, the brand develops specific products that meet the individual needs of each professional.

Besides offering extra comfort and contemporary design, HISI also cares about the convenience of its customers. Therefore, the brand sells its products online, which allows customers to buy their workwear without having to leave their home.

“Dark and light coloured clothes should be washed separately. Always follow the manufacturer’s instructions - those same instructions are placed on the garments and contain very important information related to the specificities of each type of fabric.”

CAUTION

. High temperatures are always harmful to fabrics.

. For stains that are more difficult to remove, seek a professional cleaning service.

. Use neutral detergents for delicate fabrics.

. Dissolve the detergent well so that it doesn't stain your workwear.

. JEANS: They are naturally discoloured, so wash them together or with similar coloured garments. Always turn garments inside out when washing, don't use any stain removers or dry cleaners. Use whiteners rather than bleach as bleach

wears down the fibres of workwear.

. Always dry clean garments with lining and interlinings.

. Always pay close attention to the washing symbols on the labels of each garment.

WASH

The number corresponds to the maximum washing temperature in a normal cycle.




The number corresponds to the maximum washing temperature in a gentle cycle.




Very delicate fabrics must be hand-wash only.



BLEACH

 Bleach and whiteners allowed

 Do not use bleach and whiteners

 Do not use bleach and whiteners

DRYING



Dry at low temperatures



Dry at normal temperatures



Do not tumble dry

IRONING



Dots indicate the temperature setting on the iron controller.



Do not iron.

PROFESSIONAL WASHING



Dry-cleaning is possible, the letter indicates the solvent



Dry cleaning with reduced mechanics.



Do not dry clean.



COMFORT



Fabrics that promote lightness and fluidity, making the garment more comfortable and softer to the touch. They are composed of a percentage of elastane which makes the workwear even more flexible, resistant and extremely comfortable.

PROTECTION



An antiviral treatment can be applied to the fabric made up of recycled polyester, viscose and elastane. This finish prevents viruses and bacteria from attaching to the fabric surface, reducing up to 99% of the viral load.

SUSTAINABILITY



The use of sustainable raw materials such as fabrics obtained from Recycled Polyester and Nylon, Lyocell Tencel and Buttons made from recycled paper, give a strong sustainability component both in the production process and in the product.

INNOVATION



The use of sustainable raw materials, the achievement of extra comfort through the use of light fabrics, the possibility of giving the fabric an anti-viral finish and the innovative design inspired by sportswear articles take this collection to a completely different and innovative level.

DESIGN



The cut and modern design applied to the garments aim to give a more sportswear and relaxed feel, very much focused on convenience, mobility and comfort.

A black and white photograph of three people. A man stands in the background, smiling, wearing a dark polo shirt and light trousers. Two women are seated in the foreground. The woman on the left is smiling at the camera, wearing a light-colored polo shirt and trousers. The woman on the right is looking away from the camera, smiling, wearing a dark polo shirt and trousers. They are all wearing casual sneakers.

HISI

BY UNIFARDAS

+351 22 944 22 80

(Call to national fixed network)

clientes@unifardas.pt | www.unifardas.pt

UNIFARDAS, SA

Rua Joaquim António Moreira, 292
Centro Empresarial da Maia - Armazém 19
Zona Industrial da Maia I - Maia, Portugal